

Claiborne County

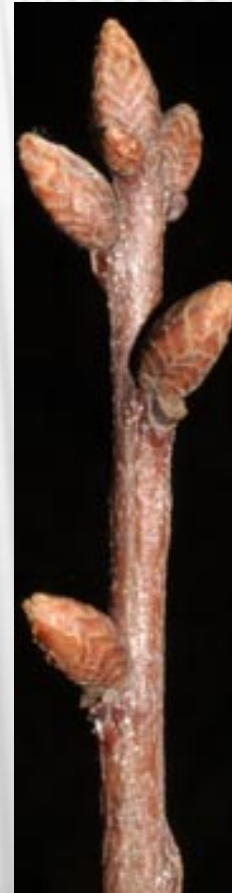
# **4-H FORESTRY JUDGING**

39.





7.

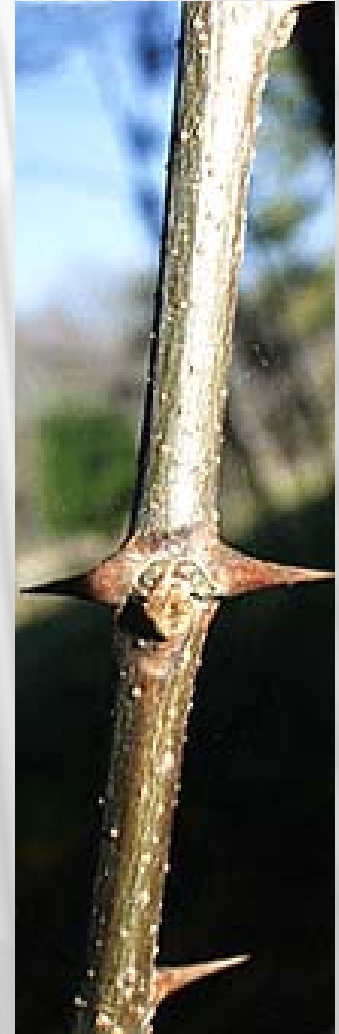


44.

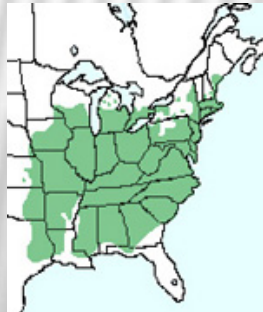
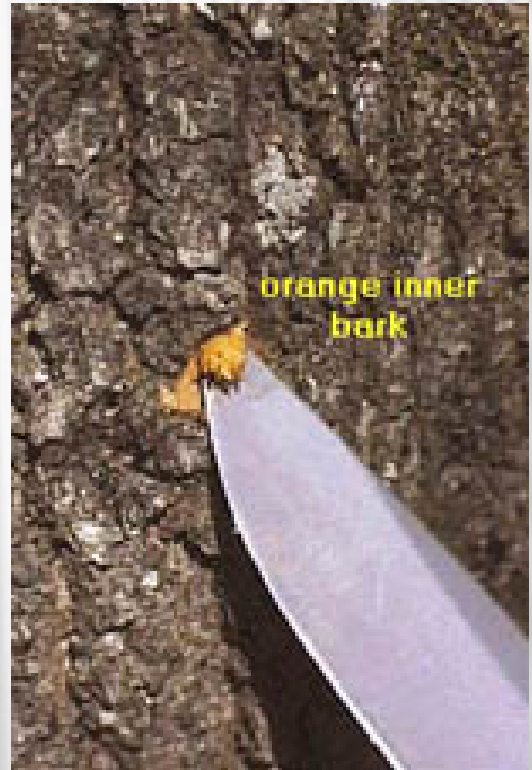
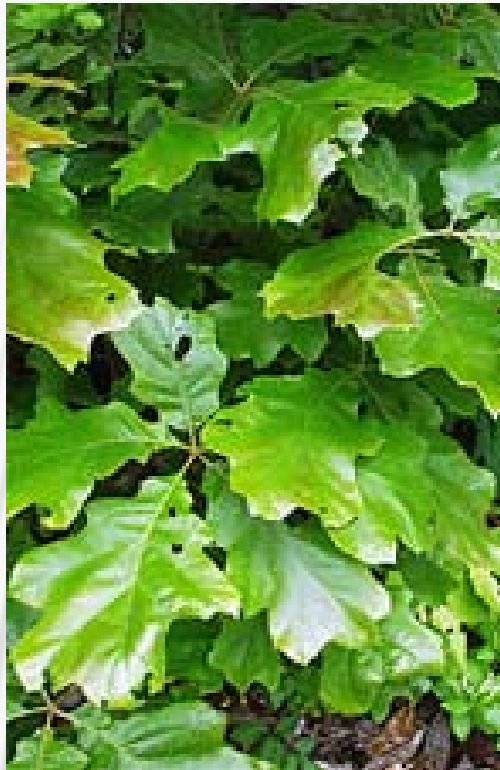




3.



# 5.





6.

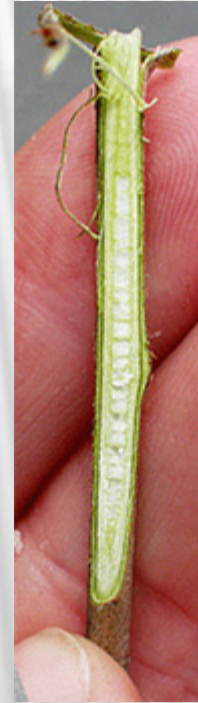
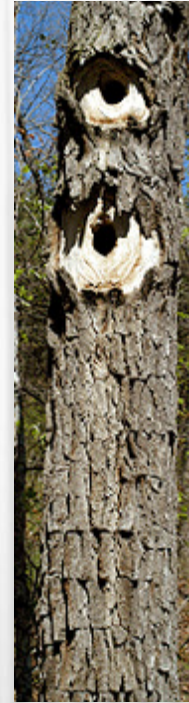








# 15.



9.



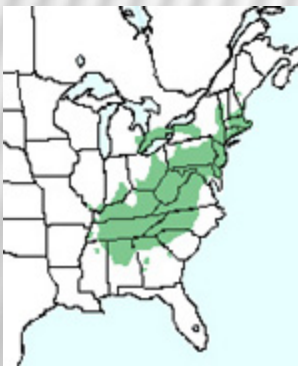


2.





# 10.





# 12.





40.





1.

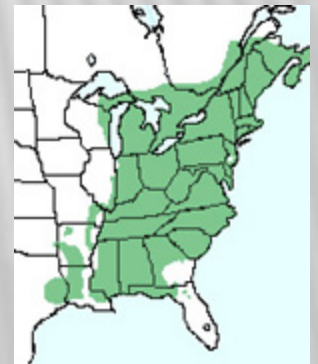


# 13.

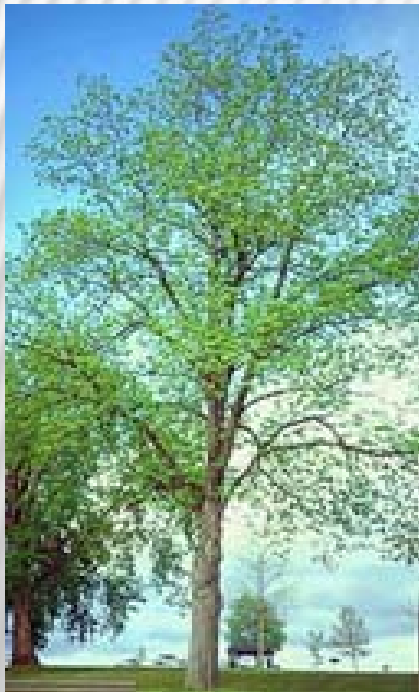




23.



28.

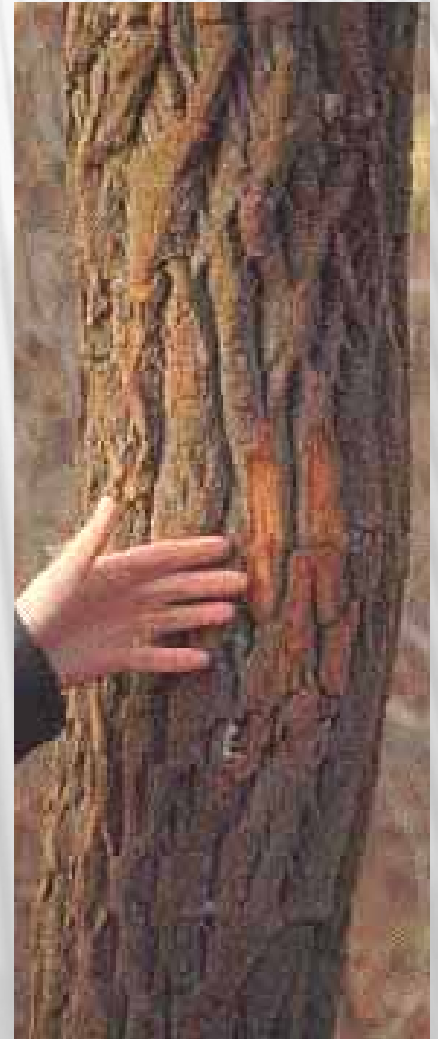




24.



4.

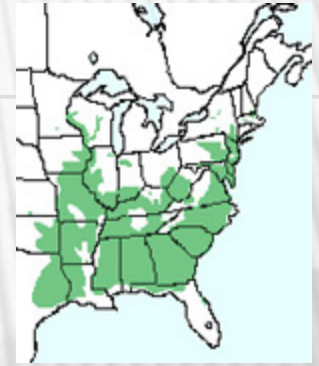




14.



31.





# 16.



18.





19.



20.





26.

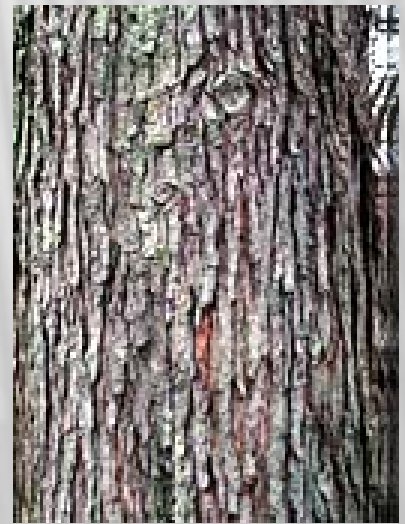
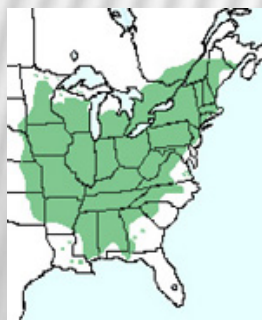


21.





# 34.



22.



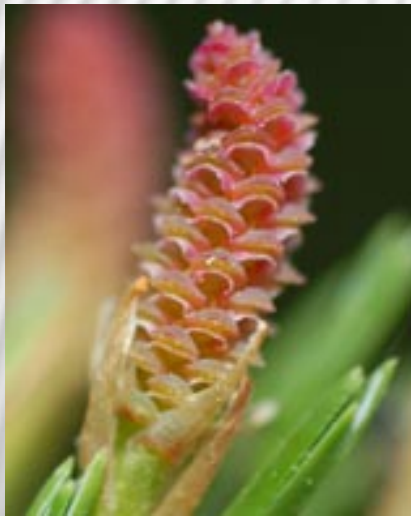
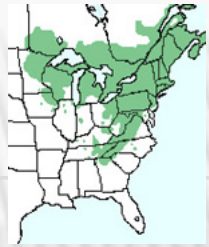


30.





43.

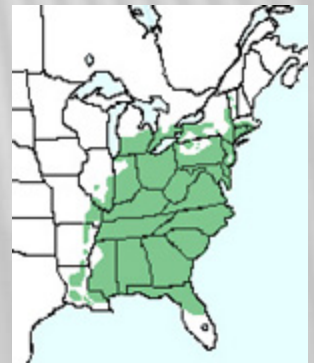
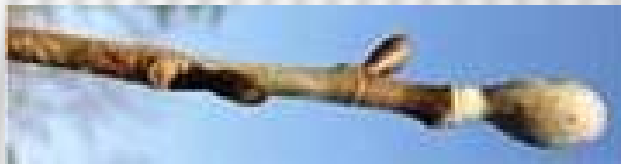
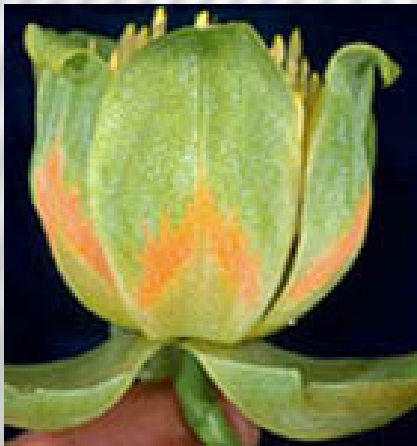




25.

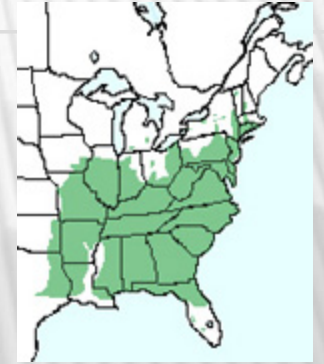


17.





27.



41.





38.



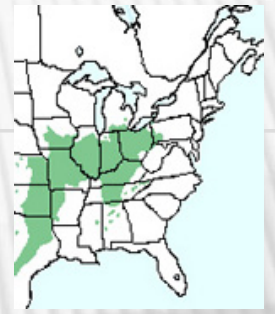


29.





32.

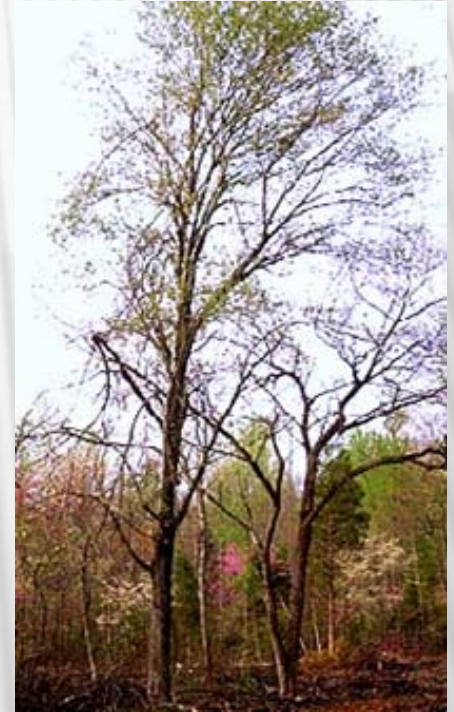


33.





35.

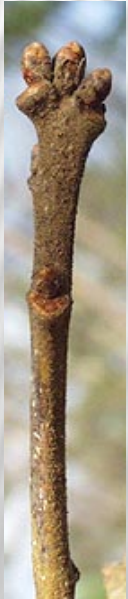


36.





# 11.



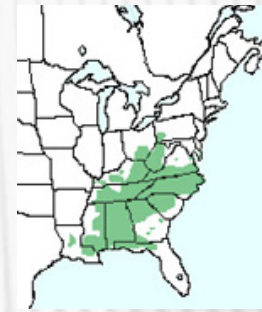
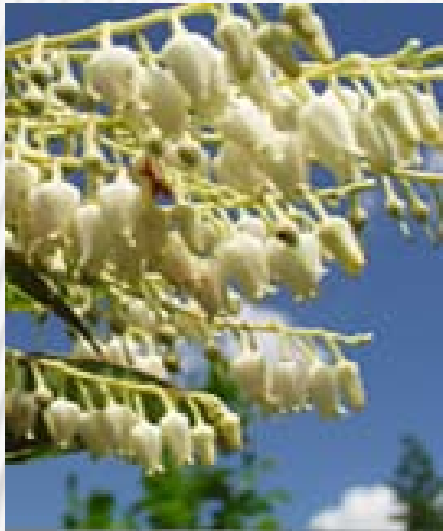


42.





37.



# ANSWER KEY

1. American elm
2. willow
3. black locust
4. sassafras
5. black oak
6. northern red oak
7. southern red oak
8. scarlet oak
9. white oak
10. chestnut oak
11. post oak
12. black cherry
13. eastern cottonwood
14. sycamore
15. black gum
16. red mulberry
17. yellow poplar
18. sweetgum
19. black walnut
20. white walnut
21. American holly
22. green ash
23. American beech
24. common persimmon
25. flowering dogwood
26. hackberry
27. mockernut hickory
28. shagbark hickory
29. pignut hickory
30. pecan
31. river birch
32. buckeye
33. sugar maple
34. silver maple
35. red maple
36. boxelder
37. sourwood
38. eastern hemlock
39. baldcypress
40. Virginia pine
41. loblolly pine
42. shortleaf pine
43. eastern white pine
44. eastern redcedar