

WILDLIFE ID & EQUIPMENT

Claiborne County 4-H
Wildlife Judging



AMERICAN KESTREL

Characteristics

Two black stripes on face, reddish-brown back and tail, hooked beak, sharp talons



AMERICAN ROBIN

Characteristics

Brick-red breast and belly, yellow beak, grayish back with darker head and tail

© Marie Read



©Charlie Hickey



AMERICAN WOODCOCK

Characteristics

Reddish-brown breast and belly,
long beak, horizontal dark bars on
head



BLUE-WINGED TEAL

Characteristics

Blue forewing, crescent-shaped white patch on face, small for a duck



BROAD-WINGED HAWK

Characteristics

Broad black and white bands on tail,
last white band broader than others;
hooked beak; sharp talons



BROWN THRASHER

Characteristics

Reddish-brown on head, back, and tail; heavily streaked belly; long tail



CANADA GOOSE

Characteristics

Black head and neck, white “chin strap”



COMMON NIGHTHAWK

Characteristics

White bar across wings, white throat, small beak



EASTERN BLUEBIRD

Characteristics

Deep blue along head, back, and tail;
reddish-brown along throat and
breast; white belly



EUROPEAN STARLING

Characteristics

Iridescent black feathers; body feathers tipped with white; short, square tail



GRASSHOPPER SPARROW

Characteristics

Breast plain and dull brown (buff-colored); dark head with light, buff-colored median stripe



GREAT HORNED OWL

Characteristics

Large ear tufts, white throat, hooked beak, sharp talons



HAIRY WOODPECKER

Characteristics

Back black except for white center stripe, outer tail feathers white, red patch on back of neck



HOUSE FINCH

Characteristics

Front of head, throat, and breast reddish-purple; reddish-purple spot on rump; streaks on sides of belly



HOUSE SPARROW

Characteristics

Black throat, rusty-brown neck, gray
on top of head and belly



HOUSE WREN

Characteristics

Black barring on tail, small size,
brownish overall



MALLARD

Characteristics

Metallic-green head, white neck ring,
reddish-brown breast



MOURNING DOVE

Characteristics

Long, pointed tail; small head; gray body; rosy-colored breast



NORTHERN BOBWHITE

Characteristics

White throat and eye stripe, sides striped reddish-brown, chunky body



NORTHERN FLICKER

Characteristics

Black bib, black spots on belly, shafts of feathers yellow, black barring on back, red patch on back of neck



NORTHERN HARRIER

Characteristics

Large white spot at base of tail; long, banded tail; brownish overall; hooked beak; sharp talons



OVENBIRD

Characteristics

Orange head stripe bordered by black, breast with reddish-brown streaks or spots



RED-EYED VIREO

Characteristics

Gray head with white eye stripe,
small hook on beak, olive body with
gray belly



RED-TAILED HAWK

Characteristics

Tail red on upper surface, reddish-brown spots across belly, hooked beak and sharp talons



RED-WINGED BLACKBIRD

Characteristics

Body black, red and yellow patches on forewing, beak straight and pointed



Video courtesy of U.S. Fish & Wildlife Service



RING-NECKED PHEASANT

Characteristics

Long, pointed tail with black barring;
white neck ring; iridescent coloring
on head



ROCK DOVE (PIGEON)

Characteristics

Multicolored feathers, neck darker than back, small head



RUBY-THROATED HUMMINGBIRD

Characteristics

Small body; long, slender beak;
iridescent throat



RUFFED GROUSE

Characteristics

Tail banded with wide terminal band,
black ruffs on sides of neck, chicken-
like in appearance



RUFOUS-SIDED TOWHEE

Characteristics

Sides reddish-brown, black head and throat, white outer tail feathers



SONG SPARROW

Large spot on center of breast,
spotting or streaking along side of
breast, belly whitish, back brownish



WILD TURKEY

Characteristics

Large size, naked head, modified feathers (beard) on breast, iridescent body feathers



WOOD DUCK

Characteristics

Glossy iridescent body, head with large crest, reddish-brown breast



YELLOW-RUMPED WARBLER

Characteristics

Yellow rump, yellow throat, yellow crown, black breast



BEAVER

Characteristics

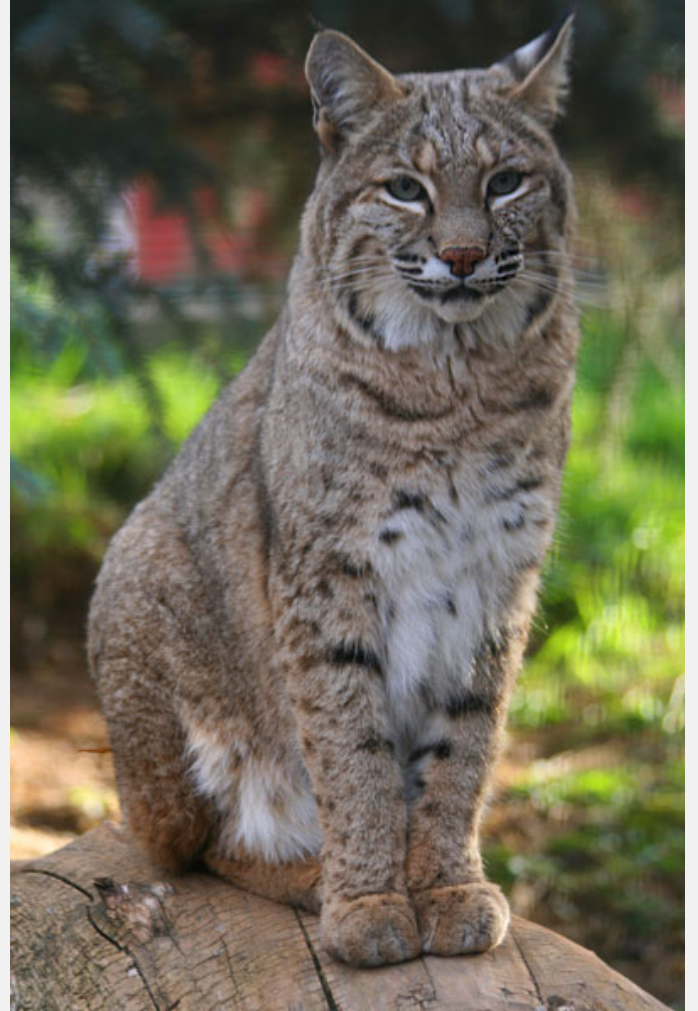
Large, broad, and flattened tail; fur brown and thick; hind feet webbed



BIG BROWN BAT

Characteristics

Black wings, brown fur, tail
membrane without fur



BOBCAT

Characteristics

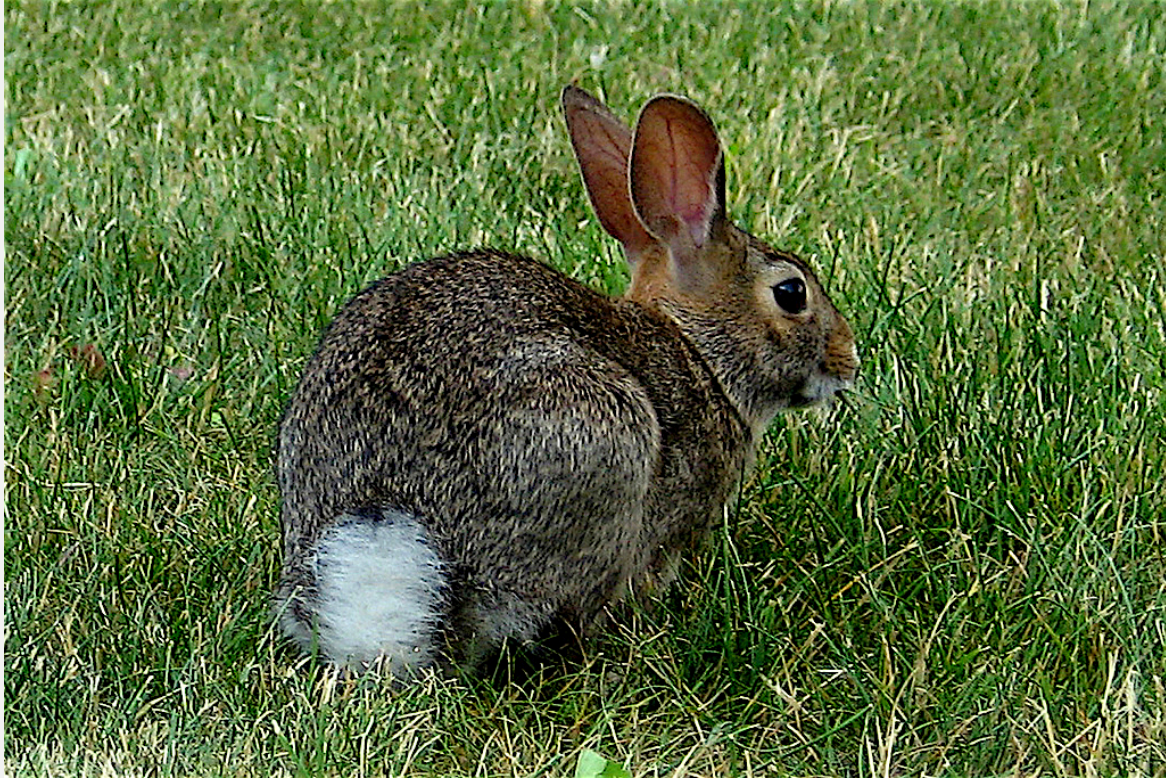
Tail short and black only at tip, ear tufts short, white spot behind each ear



COYOTE

Characteristics

Resembles medium-sized dog, body
grizzled-gray or reddish-gray, tail
often with black tip



EASTERN COTTONTAIL

Characteristics

Large white hind feet; long narrow ears; cotton-ball shaped tail, white below; neck rusty-reddish color; body fur speckled brownish and grayish



EASTERN FOX SQUIRREL

Characteristics

Body fur rusty orange mixed with gray, long tail with orange-tipped fur, belly orange



EASTERN GRAY SQUIRREL

Characteristics

Body fur grayish, long tail with white-tipped fur, belly whitish



EASTERN MOLE

Characteristics

Huge front feet and claws; short, naked tail; soft, “reversible” body fur; no external ears; eyes inconspicuous



MINK

Characteristics

Tail long and slightly bushy; rich, dark-brown fur; patch of white fur on chin



MUSKRAT

Characteristics

Body fur rich, dark brown; tail long, naked, and compressed from side to side



RACCOON

Characteristics

Tail with alternating rings of yellowish-white and black, body fur “salt and peppered,” black mask over eyes



RED SQUIRREL

Belly white with black lines along sides, tail rusty-red tipped in black



SHORT-TAILED SHREW

Characteristics

Short, furred tail; small eyes, ears, and feet; small size; pointed snout



SOUTHERN FLYING SQUIRREL

Characteristics

Tail broad and smoothly furred; folded layer of loose skin between front and hind legs; soft and silky fur—grayish above; white belly



VIRGINIA OPOSSUM

Characteristics

Long, naked, round tail; white face
with black, leathery ears



WHITE-TAILED DEER

Characteristics

Fawns reddish-brown with white spots, white undersides, feet with hooves



WOODCHUCK

Characteristics

Body fur grizzled, yellowish-brown,
and frosted at tips; legs and feet
dark brown or black; heavy-bodied



MEADOW VOLE

Characteristics

Body fur dark brown, belly silvery-gray



AMERICAN TOAD

Characteristics

Body fur rich, dark brown; tail long, naked, and compressed from side to side



BLACK RAT SNAKE

Characteristics

Body mostly dark with lighter spaces between scales, some blotches visible on back, belly marked with light and dark squares



BLUEGILL

Characteristics

Black ear flap; long, pointed pectoral fin; small mouth



BOX TURTLE

Characteristics

High, dome-like shell; black and yellow streaking on shell



BULLFROG

Characteristics

Large size, no dorso-lateral ridge,
ridge around eardrum



CHANNEL CATFISH

Characteristics

Barbels (whiskers) on face, spots on sides, forked tail



COPPERHEAD

Characteristics

Dark bands form hour-glass shape,
reddish-brown body, triangular-
shaped head, deep facial pits beneath
nostril



CRAPPIE

Characteristics

Deep, compressed body; white body with dark spots on side and on fins



CREEK CHUB

Characteristics

Dark spot at base of dorsal fin,
smooth scales



Photo by Mike Marchand

EASTERN NEWT

Characteristics

Rough skin; numerous small, black spots on back and sides; no scales or claws; laterally compressed tail



FENCE LIZARD

Characteristics

Spiny scales, long toes with small claws, long tail



FIVE-LINED SKINK

Characteristics

Smooth, shiny scales; long toes with small claws; long tail



GARTER SNAKE

Characteristics

Three longitudinal stripes along
body, small head, plain belly



LARGEMOUTH BASS

Characteristics

Large mouth; whitish body with
broad, dark stripe along side



NORTHERN LEOPARD FROG

Characteristics

Large spots along head and back,
prominent dorso-lateral ridge



PAINTED TURTLE

Characteristics

Smooth, flattened shell; greenish-yellow spot on each side of head;
short tail



RED-BACKED SALAMANDER

Characteristics

Reddish-yellow stripe down back and tail, small size, no scales or claws



SNAPPING TURTLE

Characteristics

Large head, long tail, shell with prominent ridges



SPRING PEEPER

Characteristics

Back with a dark “X” pattern, small size, small toepads



TIGER SALAMANDER

Characteristics

Dark body with large, yellow spots on back, side, and belly; no scales or claws

LIVE TRAP



HOOP NET



MINNOW TRAP



TELEMETRY RECEIVER



TELEMETRY ANTENNA



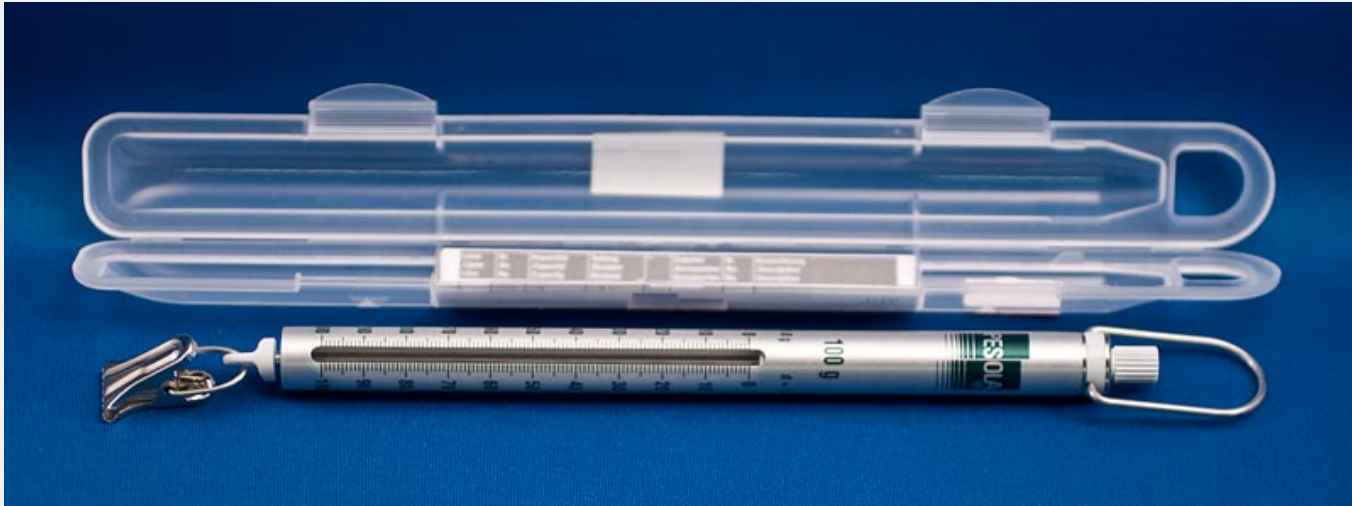
TRANSMITTER/COLLAR



GPS UNIT



PESOLA SCALE



CALIPERS



SNAKE TONGS



EAR TAGS



PNEUMATIC DART GUN



CHEMICAL IMMOBILIZATION DARTS



JABSTICK



LEG BANDS



ROCKET NET

